

Light efficiency:

103 Lumen/Watt

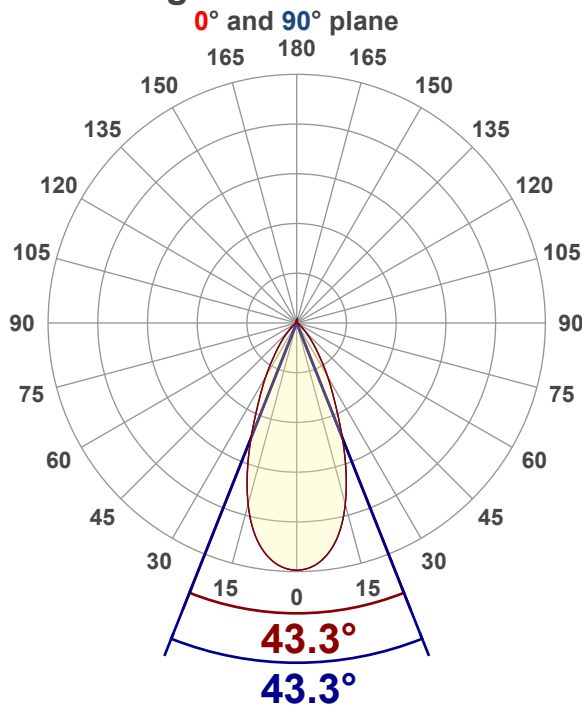
Color temperature:

5263 K

Light quality:

CRI:93.3, R_g:89.7, R_f:100.4**P: 2 / V: - / F: 3****Output: 1212 lm****Peak: 1917 cd****Power: 11.8 W****Voltage: 120 V****Current: 0.101 A****PF: 0.97****THD: 17.98 %**

Angular Distribution



Product name:

RA35-12RG-90WH - 5000K

Test Date:

12/5/2025

Beam Angle (50% of the brightness of the centre):

43.3°

Field Angle (10% of the brightness of the centre):

78.4°

Cut Off Angle (2.5% of the brightness of the centre):

100.9°

Beam Details

*measured at centre of beam

Mounting Height (feet)\(meter)	Lux*	Footcandles*	Beam width (feet) / (meter)
4 ft / 1.2 m	1289 lx	120 fc	3.2 ft / 1 m
8 ft / 2.4 m	322 lx	30 fc	6.4 ft / 1.9 m
12 ft / 3.7 m	143 lx	13 fc	9.5 ft / 2.9 m
16 ft / 4.9 m	81 lx	7 fc	12.7 ft / 3.9 m
20 ft / 6.1 m	52 lx	5 fc	15.9 ft / 4.8 m

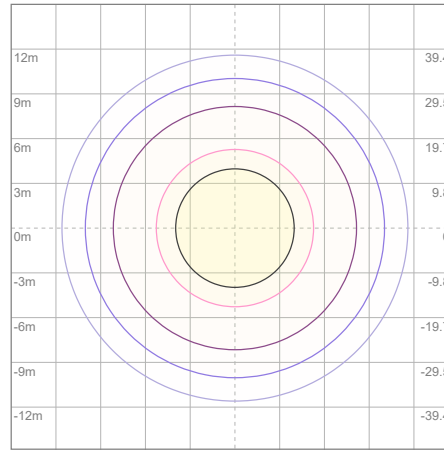
Beam center

Photometric Testing Report

Zonal Lumen Summary

Zone	Lumen	%Luminaire
0-30	908	74.92%
0-40	1096	90.43%
0-60	1197	98.76%
60-90	14.5	1.20%
70-100	5.11	0.42%
90-120	0.096	0.01%
0-90	1212	100.00%
90-180	0.588	0.05%
0-180	1212	100.00%

ISO Lux Diagram



Lux at center:	206 lx
3%	6.18 lx
5%	10.30 lx
10%	20.60 lx
30%	61.80 lx
50%	103.00 lx

Conditions:

Number of planes: 8
Lux distribution on a surface when lamp is mounted at 3.05 meters from the surface.

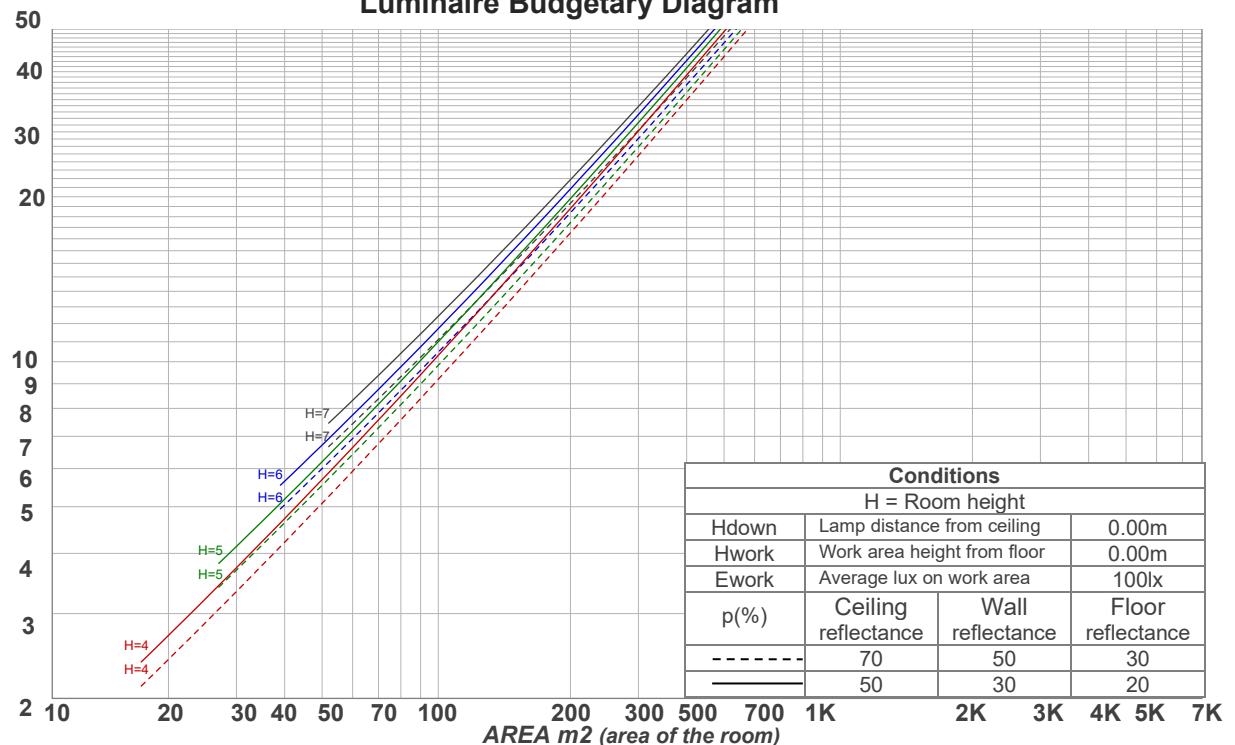
Mounting height: 3.05 meters (10 feet)

Coefficients of Utilization

Ceiling reflectance	80				70				50			30			10			0
Wall reflectance	70	50	30	10	70	50	30	10	50	30	10	50	30	10	50	30	10	0
Floor reflectance	20	20	20	20	20	20	20	20	20	20	20	20	20	20	20	20	20	0
RCR	(RCR: Room Cavity Ratio) Room Values are expressed as percentage of Lumens delivered to the task surface																	
0	119	119	119	119	116	116	116	116	111	111	111	106	106	106	102	102	102	100
1	114	111	108	106	111	109	107	105	105	103	101	101	100	98	98	96	95	94
2	108	103	100	96	106	102	98	95	98	96	93	96	93	91	93	91	89	88
3	103	97	92	88	101	95	91	87	93	89	86	90	87	85	88	86	83	82
4	98	91	85	81	96	90	85	81	88	83	80	86	82	79	84	81	78	77
5	93	85	80	76	92	84	79	75	83	78	75	81	77	74	80	76	73	72
6	89	81	75	71	88	80	74	70	78	74	70	77	73	70	76	72	69	68
7	85	76	70	66	84	76	70	66	74	69	66	73	69	66	72	68	65	64
8	81	72	66	63	80	72	66	62	71	66	62	70	65	62	69	65	62	60
9	78	69	63	59	77	68	63	59	67	62	59	66	62	59	65	61	58	57
10	74	65	60	56	74	65	60	56	64	59	56	63	59	56	63	58	56	54

LAMPS (number of lamps)

Luminaire Budgetary Diagram

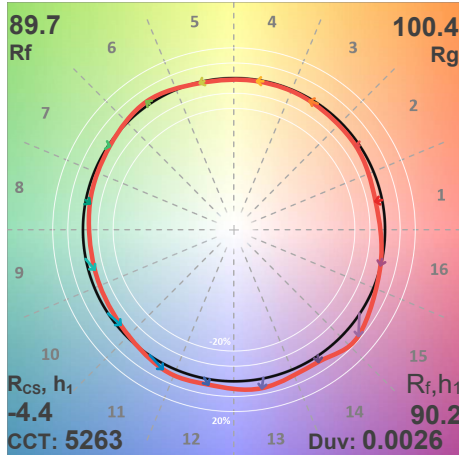


Conditions			
H = Room height			
Hdown	Lamp distance from ceiling	0.00m	
Hwork	Work area height from floor	0.00m	
Ework	Average lux on work area	100lx	
p(%)	Ceiling reflectance	Wall reflectance	Floor reflectance
-----	70	50	30
-----	50	30	20

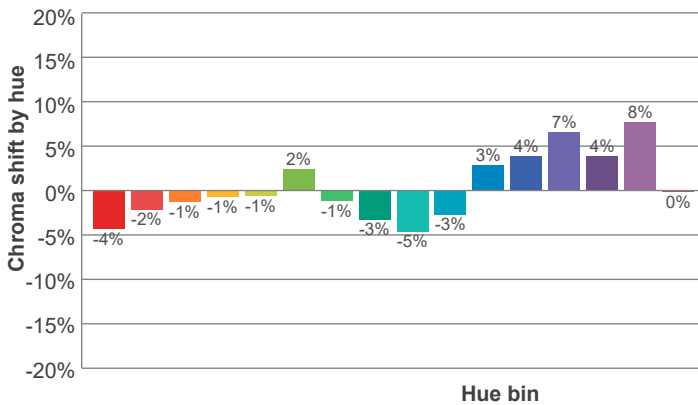
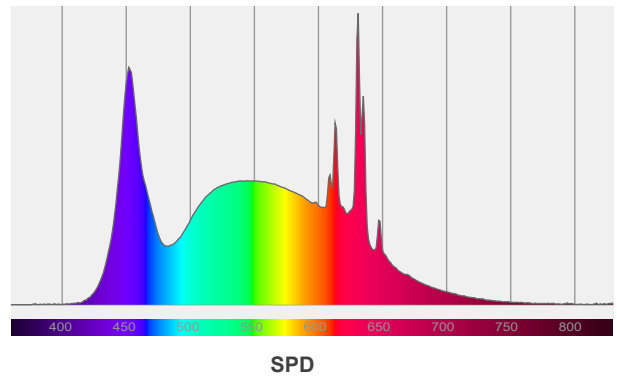
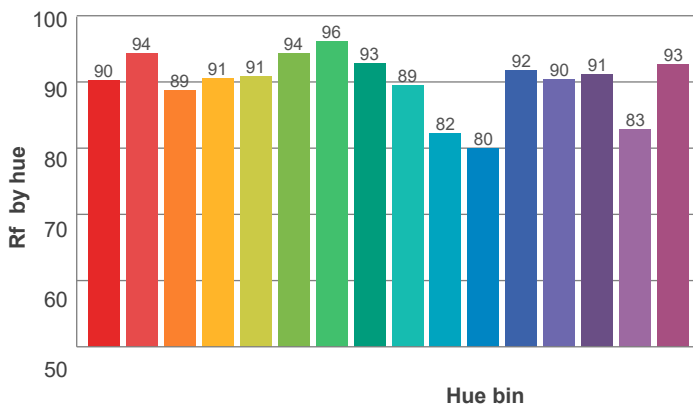
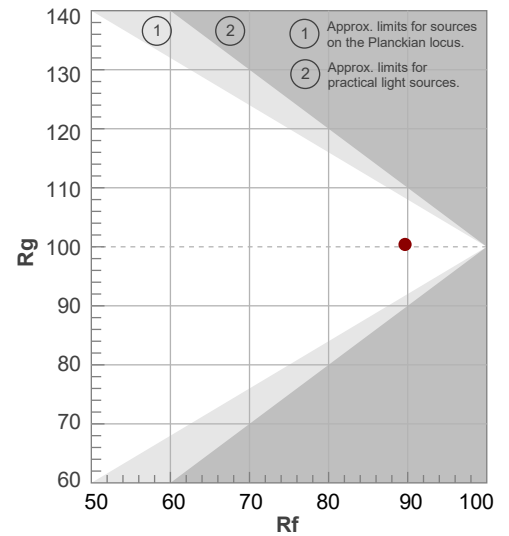
Photometric Testing Report

ANSI/IES TM-30-18

P: 2 / V: - / F: 3



Hue Bin	R _f	Shifts (%)	
		Chroma	Hue
1	90	-4%	0%
2	94	-2%	1%
3	89	-1%	6%
4	91	-1%	4%
5	91	-1%	3%
6	94	2%	1%
7	96	-1%	0%
8	93	-3%	2%
9	89	-5%	8%
10	82	-3%	11%
11	80	3%	12%
12	92	4%	3%
13	90	7%	-2%
14	91	4%	-2%
15	83	8%	-13%
16	93	0%	-4%



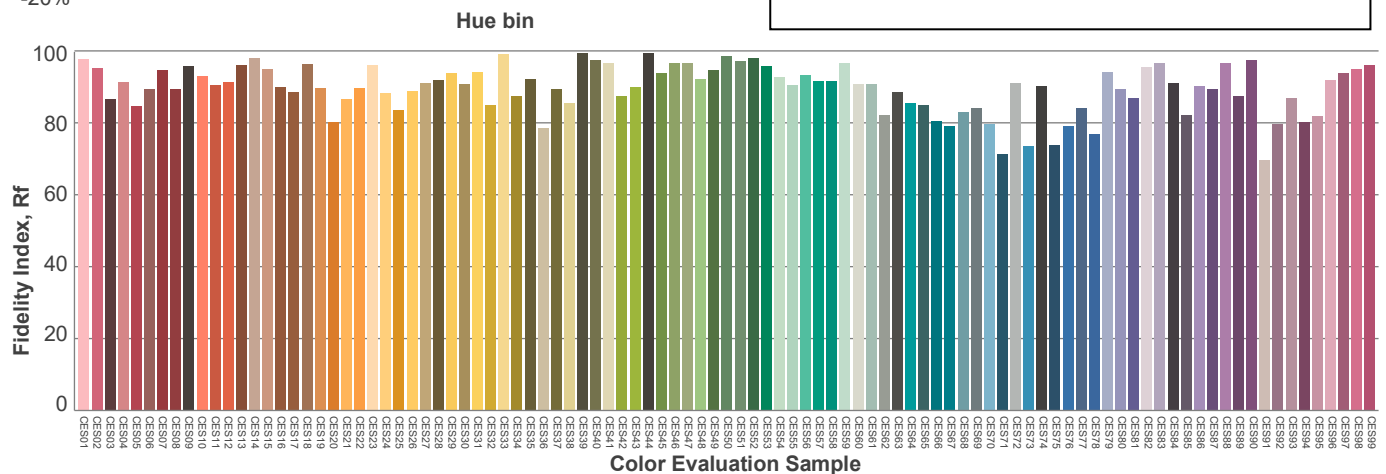
Red: 19.6%, Power=3.2mW

Blue: 19.4%, Power=13.7mW

Green: 32.6%, Power=18.1mW

UVA: 0%, Power=0.0mW

Dominant Wavelength: 581nm

1st Peak Wavelength: 631nm2nd Peak Wavelength: 452nm

Glare Evaluation According to UGR

p Ceiling		70	70	50	50	30	70	70	50	50	30
p Walls		50	30	50	30	30	50	30	50	30	30
p Floor		20	20	20	20	20	20	20	20	20	20
Room size X Y		Viewing direction at right angles to lamp axis					Viewing direction parallel to lamp axis				
2H	2H	20.0	20.6	20.1	20.8	21.0	20.0	20.6	20.1	20.8	21.0
	3H	19.8	20.5	20.1	20.7	20.9	19.8	20.5	20.1	20.7	20.9
	4H	19.7	20.5	20.1	20.7	20.9	19.7	20.5	20.1	20.7	20.9
	6H	19.8	20.4	20.1	20.7	21.0	19.8	20.4	20.1	20.7	21.0
	8H	19.7	20.3	20.0	20.6	21.0	19.7	20.3	20.0	20.6	21.0
	12H	19.7	20.2	20.0	20.6	21.0	19.7	20.2	20.0	20.6	21.0
4H	2H	19.7	20.4	20.1	20.6	20.8	19.7	20.4	20.1	20.6	20.8
	3H	19.7	20.3	20.1	20.6	21.0	19.7	20.3	20.1	20.6	21.0
	4H	19.6	20.1	20.1	20.6	21.1	19.6	20.1	20.1	20.6	21.1
	6H	19.6	20.2	20.1	20.5	20.8	19.6	20.2	20.1	20.5	20.8
	8H	19.6	20.1	20.1	20.4	20.8	19.6	20.1	20.1	20.4	20.8
	12H	19.5	19.9	20.0	20.3	20.8	19.5	19.9	20.0	20.3	20.8
8H	4H	19.5	20.0	20.0	20.4	20.7	19.5	20.0	20.0	20.4	20.7
	6H	19.5	19.9	20.0	20.3	20.9	19.5	19.9	20.0	20.3	20.9
	8H	19.6	19.8	20.1	20.3	21.0	19.6	19.8	20.1	20.3	21.0
	12H	19.5	19.7	20.1	20.2	20.8	19.5	19.7	20.1	20.2	20.8
12H	4H	19.5	19.9	20.0	20.3	20.7	19.5	19.9	20.0	20.3	20.7
	6H	19.5	19.8	20.0	20.3	20.9	19.5	19.8	20.0	20.3	20.9
	8H	19.5	19.7	20.1	20.2	20.8	19.5	19.7	20.1	20.2	20.8
Variation of the observer position for the luminaire distance S											
S = 1.0H		3.6 / -5.1					3.6 / -5.1				
S = 1.5H		6.0 / -6.4					6.0 / -6.4				
S = 2.0H		7.8 / -7.0					7.8 / -7.0				
Standard table		n/a					n/a				
Correction summand		n/a					n/a				
Corrected glare indices referring to 1212 lm total luminous flux											